

Public Consultation No. 2 Information Brochure

Leitrim Village Flood Relief Scheme

February 2025



Comhairle Chontae Liatroma
Leitrim County Council

Tionscadal Éireann
Project Ireland
2040



OPW

Oifig na
nOibreacha Poiblí
Office of Public Works

RYAN HANLEY

Background

Leitrim County Council in partnership with the Office of Public Works [funding authority] are progressing the Leitrim Village Flood Relief Scheme (FRS). Leitrim Village has a history of flooding from the River Shannon, the Ballinamore to Ballyconnel Canal and their tributaries. Major flood events in November 2009, the Winter of 2015 and, to a lesser extent, Spring 2020 have presented the most severe flooding in living memory in the area. Ryan Hanley were subsequently appointed by Leitrim County Council in January 2021 as engineering and environmental consultants to develop a FRS for Leitrim Village.

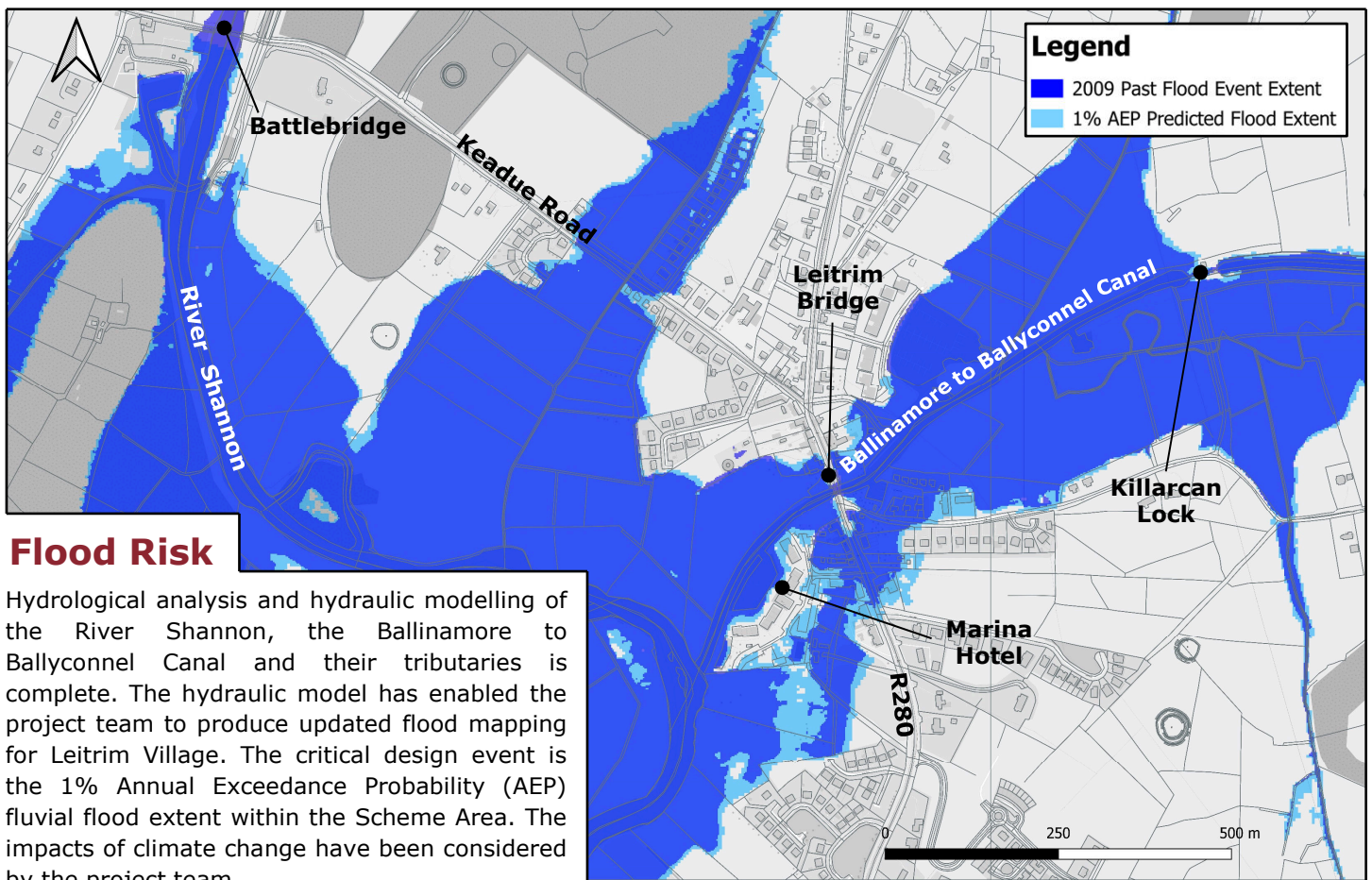
An initial Public Consultation Event was held May 2021 where the project team introduced the project, sought initial views on the key issues which the study should address, and gathered local knowledge and information on flooding in the Study Area. Since the initial Public Consultation Event, the project team have substantially completed the options assessment and have identified a Proposed Scheme for Leitrim Village. Measures are proposed which will address flooding from the River Shannon and the Ballinamore to Ballyconnel Canal. The purpose of Public Consultation Day (PCD) No. 2 is to present the Proposed Scheme and to gather any feedback from the public prior to finalising the scheme.

Progress to date

To date, work has been completed on the flood relief scheme including:

- Identification of the Study Area
- Extensive Data Collection
- Constraints Study
- Public Consultation
- 2020 Post Flood Survey
- Topographical Surveys
- Geotechnical Investigation
- Environmental Surveys
- Stakeholder Consultation
- Hydrological Analysis
- Hydraulic Modelling
- Options Identification
- Options Development

Since the initial Public Consultation Event, the project team have completed a large body of work to determine the baseline conditions and flood risk in Leitrim Village and environs and have analysed all options available towards managing this flood risk. Following this the project team have analysed and compared the options available giving consideration to the technical, social, environmental and economic criteria towards identifying the proposed scheme. Further detail of the Proposed Scheme is provided within this brochure.



Proposed Scheme for Leitrim Village

The Proposed Scheme for Leitrim Village FRS includes a combination of raised defence measures. The primary solution for the town is containment (defences). Alternative options were considered during the options assessment process including flow diversion, river deepening and large-scale storage. Substantial effort was invested in the consideration of those alternative options in conjunction with the Carrick on Shannon FRS project, however these were ultimately ruled out as solutions for Carrick on Shannon FRS due to the transfer of flood risk elsewhere and environmental constraints across the catchment. The same reasons ruling out these alternative options are directly applicable to the Leitrim Village FRS. The proposed scheme, the defended scheme, is detailed below.

Flood risk must be managed from one main source, namely from the River Shannon. The Ballinamore to Ballyconnel Canal and other local tributaries are significantly backwatered from the River Shannon. The flood risk is managed across four separate Flood Cells on the banks of the River Shannon and Ballinamore to Ballyconnel Canal. These cells are defended using raised defences and associated pumping stations. Raised defences consist of embankments, walls, demountable elements and public realm enhancement elements.

