

© COPYRIGHT OF THIS DRAWING IS RESERVED BY LEITRIM COUNTY COUNCIL. NO PART SHALL BE REPRODUCED OR TRANSMITTED WITHOUT THEIR WRITTEN PERMISSION.

NO CHANGES OF WHATSOEVER NATURE ARE TO BE MADE TO ANY DETAILS SET OUT OR CONTAINED IN ANY LEITRIM COUNTY COUNCIL SPECIFICATIONS OR DRAWINGS UNLESS THE EXPRESS CONSENT HAS BEEN OBTAINED IN ADVANCE, IN WRITING, FROM LEITRIM COUNTY COUNCIL.



NOTES

SITE LOCATION MAP

SCALE: 1 / 1000.

R04	XX.XX.2025	ISSUED FOR TENDER	MG	MG
R03	14.03.2025	ISSUED FOR PLANNING	MG	MG
R02	28.02.2025	REVISIONS POST RSA REPORT	MG	MG
R01	10.01.2025	FIRST ISSUE	MG	MG

Issue	Date	Description	Made	Checked
-------	------	-------------	------	---------

Drawing Status: **TENDER**



Comhairle Chontae Leitroma
Leitrim County Council
 Park Lane House, Priests Lane, Carrick on Shannon Co. Leitrim, N41 RX53
 Tel: 071 9620005
 Website: www.Leitrimcoco.ie

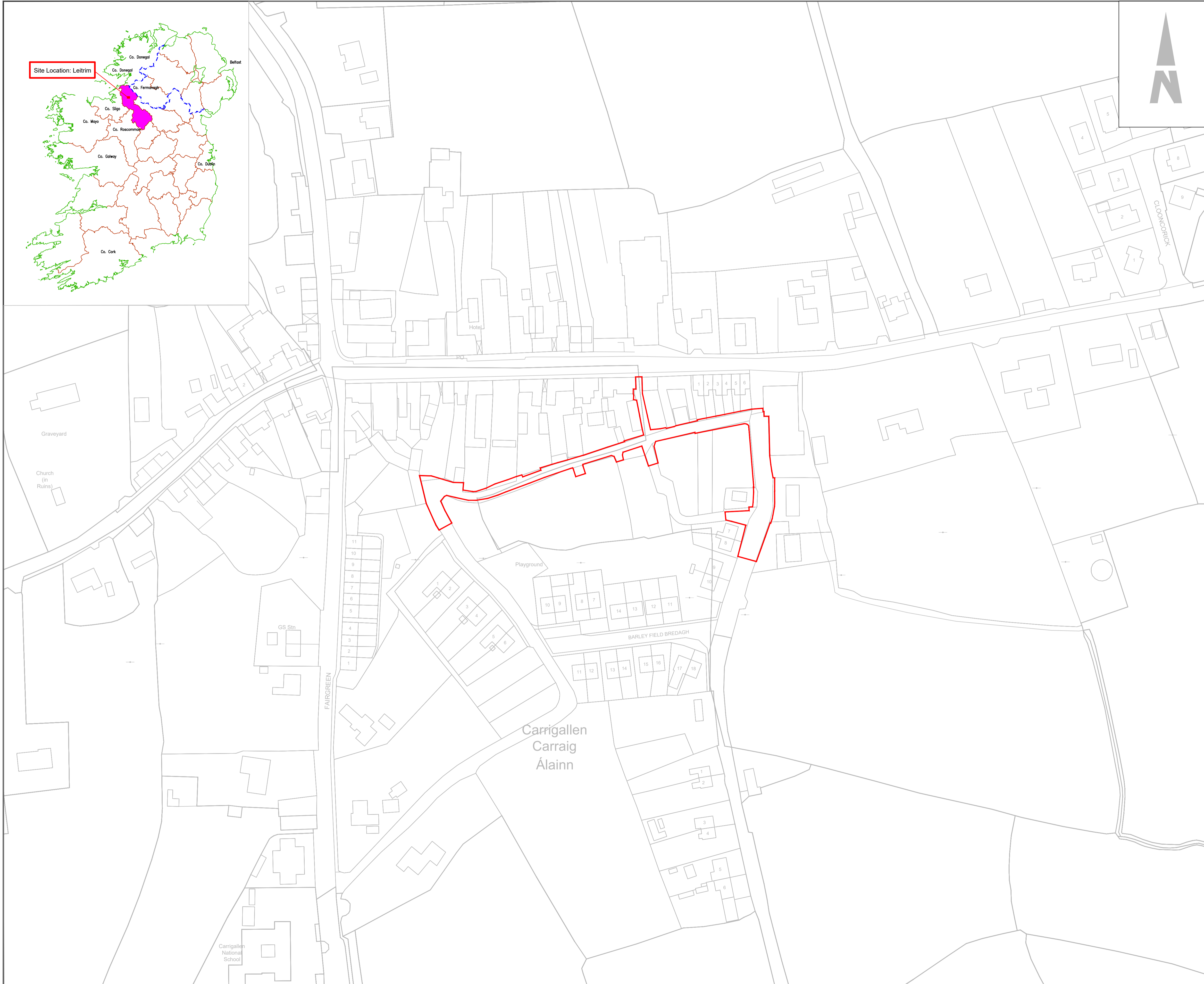
Section
ROADS DEPARTMENT
ACTIVE TRAVEL

Project
CARRIGALLEN PERMEABILITY LINK PROJECT, CO. LEITRIM

Drawing Title
ROAD LAYOUT PLAN

Drawn/Design	MG	Date	14.07.2025	Scales	1:100
Checked	MG	Approved	MG		1:1000

Drawing No. **LM 25 0002-1 - Carrigallen** Rev **R02**



© COPYRIGHT OF THIS DRAWING IS RESERVED BY LEITRIM COUNTY COUNCIL. NO PART SHALL BE REPRODUCED OR TRANSMITTED WITHOUT THEIR WRITTEN PERMISSION.
 NO CHANGES OF WHATSOEVER NATURE ARE TO BE MADE TO ANY DETAILS SET OUT OR CONTAINED IN ANY LEITRIM COUNTY COUNCIL SPECIFICATIONS OR DRAWINGS UNLESS THE EXPRESS CONSENT HAS BEEN OBTAINED IN ADVANCE, IN WRITING, FROM LEITRIM COUNTY COUNCIL.

NOTES

- GENERAL NOTES:**
1. MAPS ARE PRODUCED UNDER LICENCE FROM ORDNANCE SURVEY IRELAND © NATIONAL MAPPING DIVISION OF TAILTE ÉIREANN. LICENCE NO: CYAL5041413
 2. THIS DRAWING IS TO BE READ IN CONJUNCTION WITH ALL RELEVANT ENGINEER'S, ARCHITECT'S AND SPECIALIST'S DRAWINGS AND THE SPECIFICATION.
 3. DO NOT SCALE FROM THIS DRAWING MANUALLY OR ELECTRONICALLY. ALL WORKS SHALL BE CONSTRUCTED IN ACCORDANCE WITH THE WORKS REQUIREMENTS.
 4. ALL DIMENSIONS IN METRES UNLESS SPECIFIED OTHERWISE.
 5. ALL CO-ORDINATES ARE TO IRISH TRANSVERSE MERCATOR.
 6. ALL LEVELS ARE TO ORDNANCE DATUM (MALIN HEAD).
 7. ALL TEMPORARY TRAFFIC & OPERATIONS MANAGEMENT SHALL COMPLY FULLY WITH THE WORKS REQUIREMENTS.
 8. THE CONTRACTOR MUST LIAISE DIRECTLY WITH LOCAL AUTHORITY DEPARTMENTS AS DIRECTED IN THE WORKS REQUIREMENTS.
 9. ALL VEHICULAR & PEDESTRIAN, CYCLE & PRIVATE ACCESS ROUTES WITHIN AND SURROUNDING THE WORKS EXTENTS MUST BE MAINTAINED THROUGHOUT THE WORKS IN ACCORDANCE WITH THE CONTRACTORS APPROVED TEMPORARY TRAFFIC & OPERATIONS MANAGEMENT PLAN.
- ROADS NOTES:**
10. ALL WORKS TO BE CONSTRUCTED IN ACCORDANCE WITH THE TII SPECIFICATION FOR ROAD WORKS UNLESS OVERRIDDEN BY LOCAL OVERSEEING AUTHORITY'S STANDARDS.
 11. ALL ROAD MARKINGS & SIGNS SHALL COMPLY FULLY WITH THE TRAFFIC SIGNS MANUAL, PUBLISHED BY THE DEPARTMENT OF TRANSPORT.
 12. SIGNS & MARKINGS: CONTRACTOR TO CONFIRM PRECISE SETTING OUT WITH EMPLOYERS REPRESENTATIVE PRIOR TO COMPLETION.
 13. ALL TRAFFIC MANAGEMENT TO COMPLY FULLY WITH THE PROVISIONS OF CHAPTER 9 OF THE TRAFFIC SIGNS MANUAL.
 14. BOLLARDS WITHIN FOOTPATH TO BE SET-BACK 300mm FROM CARRIAGEWAY EDGE.
- SERVICES NOTES:**
15. ALL DRAWINGS TO BE CHECKED BY CONTRACTOR ON SITE AND ENGINEER INFORMED OF DISCREPANCIES BEFORE WORK COMMENCES.
 16. CONTRACTOR SHALL SATISFY HIMSELF AS TO THE ACCURACY OF PAVEMENT LEVELS ON SITE PRIOR TO COMMENCEMENT OF WORKS ON SITE.

FEATURES KEY

- SITE BOUNDARY
- DOUBLE YELLOW LINES TO TSM
- PRE-CAST KERB 125mm IN HEIGHT
- PRE-CAST KERB 25mm IN HEIGHT (Vehicle Access)
- PRE-CAST KERB 0-6mm IN HEIGHT (Pedestrians)
- TRANSITION KERB
- ▨ CONCRETE FOOTPATH TO TII CC-SCD-01105 (TYPE 1), WIDTH VARIES.
- REMOVE EXISTING, NEW 1.2M HIGH, TREATED TIMBER CLOSE BOARDED FENCE.
- ▨ RESURFACED CYCLE LANE / CARRIAGEWAY.
- NEW GRASS VERGE SOILED & SEEDED.
- DECOMMISSION PUBLIC LIGHTING COLUMN x 1 No.
- PROPOSED PUBLIC LIGHTING x 8 No.
- BLACK BOLLARD
- ▨ NEW PRECAST CONCRETE GULLY CW GRATING & FRAME CONNECTED TO EXISTING DRAINAGE NETWORK.

R04	XX.XX.2025	ISSUED FOR TENDER	MG	MG
R03	14.03.2025	ISSUED FOR PLANNING	MG	MG
R02	28.02.2025	REVISIONS POST RSA REPORT	MG	MG
R01	10.01.2025	FIRST ISSUE	MG	MG

Issue	Date	Description	Made	Checked
Drawing Status:				

TENDER

NTA
Udarás Náisiúnta Iompair
National Transport Authority

Comhairle Chontae Leitrim
Leitrim County Council

Park Lane House, Priests Lane, Carrick on Shannon Co. Leitrim, N41 RX53
Tel: 071 9620005
Website: www.Leitrimcoco.ie

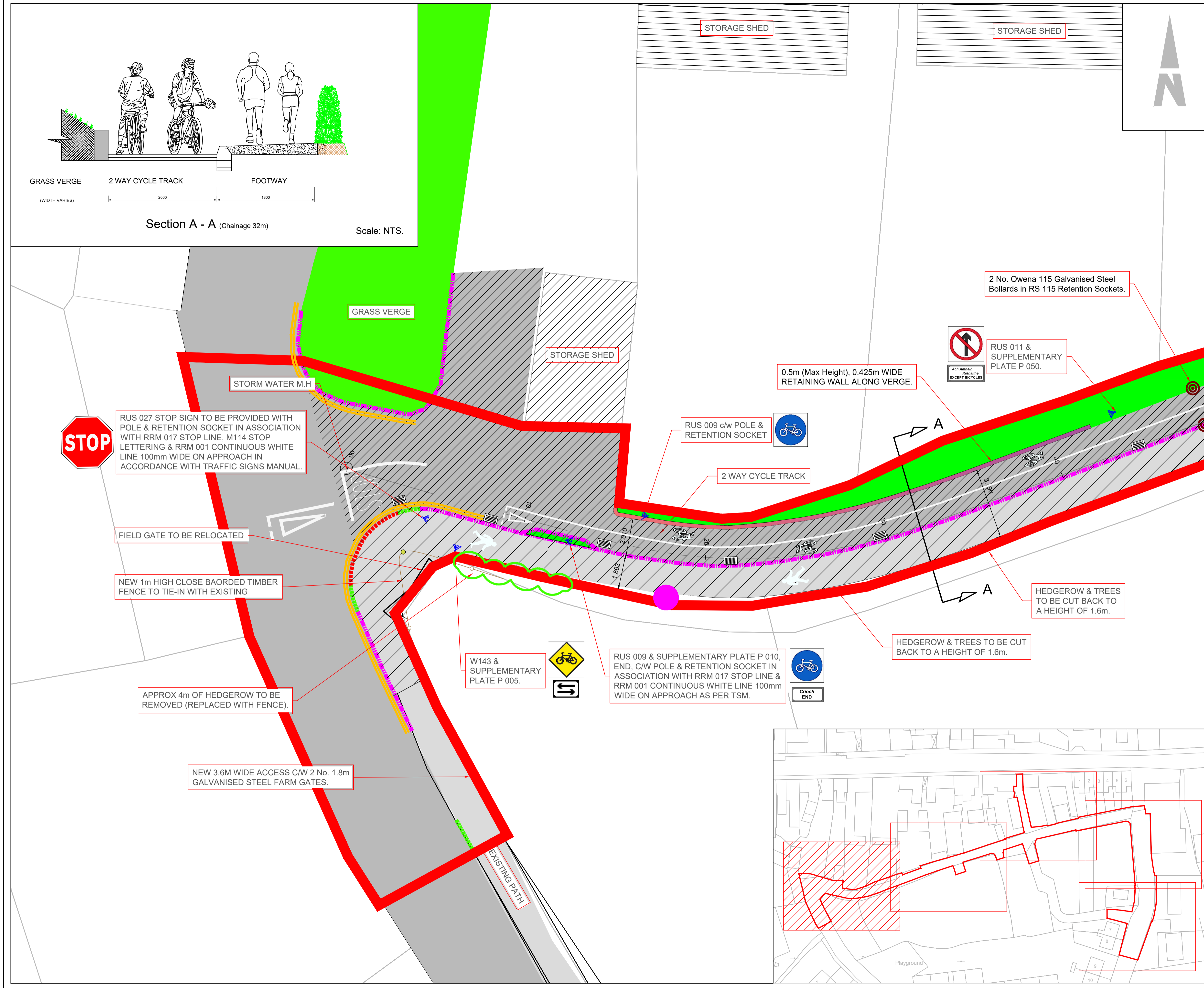
Section
**ROADS DEPARTMENT
 ACTIVE TRAVEL**

Project
**CARRIGALLEN PERMEABILITY
 LINK PROJECT,
 CO. LEITRIM**

Drawing Title
Chainage 0m - 45m.

Drawn/Design	MG	Date	01.12.2025	Scales	1:100 @ A1
Checked	MG	Approved	MG		

Drawing No. **LM 25 0002-2 - Carrigallen** Rev **R02**



© COPYRIGHT OF THIS DRAWING IS RESERVED BY LEITRIM COUNTY COUNCIL. NO PART SHALL BE REPRODUCED OR TRANSMITTED WITHOUT THEIR WRITTEN PERMISSION.

NO CHANGES OF WHATSOEVER NATURE ARE TO BE MADE TO ANY DETAILS SET OUT OR CONTAINED IN ANY LEITRIM COUNTY COUNCIL SPECIFICATIONS OR DRAWINGS UNLESS THE EXPRESS CONSENT HAS BEEN OBTAINED IN ADVANCE, IN WRITING, FROM LEITRIM COUNTY COUNCIL.

NOTES

- GENERAL NOTES:**
- MAPS ARE PRODUCED UNDER LICENCE FROM ORDNANCE SURVEY IRELAND © NATIONAL MAPPING DIVISION OF TAILTE ÉIREANN. LICENCE NO. CYAL5041413
 - THIS DRAWING IS TO BE READ IN CONJUNCTION WITH ALL RELEVANT ENGINEER'S, ARCHITECT'S AND SPECIALIST'S DRAWINGS AND THE SPECIFICATION.
 - DO NOT SCALE FROM THIS DRAWING MANUALLY OR ELECTRONICALLY. ALL WORKS SHALL BE CONSTRUCTED IN ACCORDANCE WITH THE WORKS REQUIREMENTS.
 - ALL DIMENSIONS IN METRES UNLESS SPECIFIED OTHERWISE.
 - ALL CO-ORDINATES ARE TO IRISH TRANSVERSE MERCATOR.
 - ALL LEVELS ARE TO ORDNANCE DATUM (MALIN HEAD).
 - ALL TEMPORARY TRAFFIC & OPERATIONS MANAGEMENT SHALL COMPLY FULLY WITH THE WORKS REQUIREMENTS.
 - THE CONTRACTOR MUST LIAISE DIRECTLY WITH LOCAL AUTHORITY DEPARTMENTS AS DIRECTED IN THE WORKS REQUIREMENTS.
 - ALL VEHICULAR & PEDESTRIAN, CYCLE & PRIVATE ACCESS ROUTES WITHIN AND SURROUNDING THE WORKS EXTENTS MUST BE MAINTAINED THROUGHOUT THE WORKS IN ACCORDANCE WITH THE CONTRACTORS APPROVED TEMPORARY TRAFFIC & OPERATIONS MANAGEMENT PLAN.
- ROADS NOTES:**
- ALL WORKS TO BE CONSTRUCTED IN ACCORDANCE WITH THE TII SPECIFICATION FOR ROAD WORKS UNLESS OVERRIDDEN BY LOCAL OVERSEEING AUTHORITY'S STANDARDS.
 - ALL ROAD MARKINGS & SIGNS SHALL COMPLY FULLY WITH THE TRAFFIC SIGNS MANUAL, PUBLISHED BY THE DEPARTMENT OF TRANSPORT.
 - SIGNS & MARKINGS: CONTRACTOR TO CONFIRM PRECISE SETTING OUT WITH EMPLOYERS REPRESENTATIVE PRIOR TO COMPLETION.
 - ALL TRAFFIC MANAGEMENT TO COMPLY FULLY WITH THE PROVISIONS OF CHAPTER 9 OF THE TRAFFIC SIGNS MANUAL.
 - BOLLARDS WITHIN FOOTPATH TO BE SET-BACK 300mm FROM CARRIAGEWAY EDGE.
- SERVICES NOTES:**
- ALL DRAWINGS TO BE CHECKED BY CONTRACTOR ON SITE AND ENGINEER INFORMED OF DISCREPANCIES BEFORE WORK COMMENCES.
 - CONTRACTOR SHALL SATISFY HIMSELF AS TO THE ACCURACY OF PAVEMENT LEVELS ON SITE PRIOR TO COMMENCEMENT OF WORKS ON SITE.

FEATURES KEY

- SITE BOUNDARY
- DOUBLE YELLOW LINES TO TSM
- PRE-CAST KERB 125mm IN HEIGHT
- PRE-CAST KERB 25mm IN HEIGHT (Vehicle Access)
- PRE-CAST KERB 0-6mm IN HEIGHT (Pedestrians)
- TRANSITION KERB
- CONCRETE FOOTPATH TO TII CC-SCD-01105 (TYPE 1), WIDTH VARIES.
- REMOVE EXISTING, NEW 1.2M HIGH, TREATED TIMBER CLOSE BOARDED FENCE.
- RESURFACED CYCLE LANE / CARRIAGEWAY.
- NEW GRASS VERGE SOILED & SEEDED.
- DECOMMISSION PUBLIC LIGHTING COLUMN x 1 No.
- PROPOSED PUBLIC LIGHTING x 8 No.
- BLACK BOLLARD
- NEW PRECAST CONCRETE GULLY CW GRATING & FRAME CONNECTED TO EXISTING DRAINAGE NETWORK.

R04	XX.XX.2025	ISSUED FOR TENDER	MG	MG
R03	14.03.2025	ISSUED FOR PLANNING	MG	MG
R02	28.02.2025	REVISIONS POST RSA REPORT	MG	MG
R01	10.01.2025	FIRST ISSUE	MG	MG

Issue	Date	Description	Made	Checked
Drawing Status:				

TENDER

NTA
Udarás Náisiúnta Iompar
National Transport Authority

Comhairle Chontae Liatroma
Leitrim County Council

Park Lane House, Priests Lane, Carrick on Shannon Co. Leitrim, N41 RX53
Tel: 071 9620005
Website: www.Leitrimcoco.ie

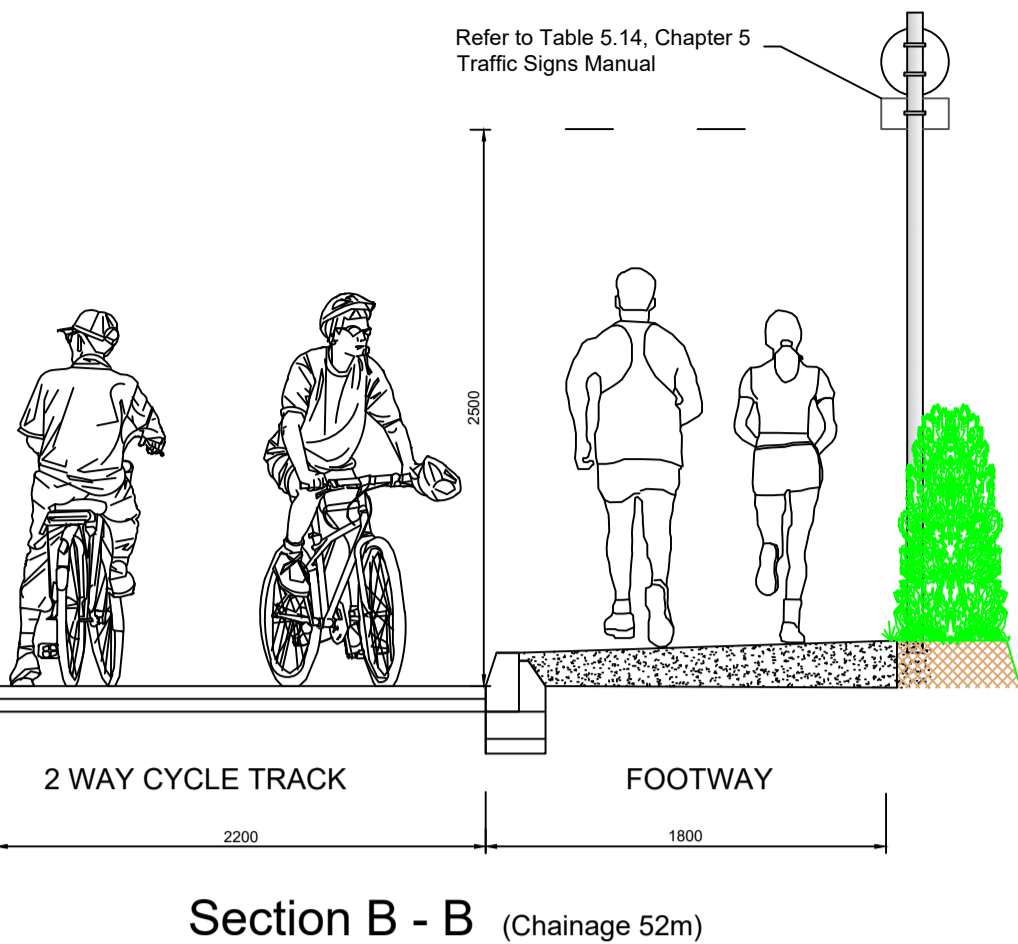
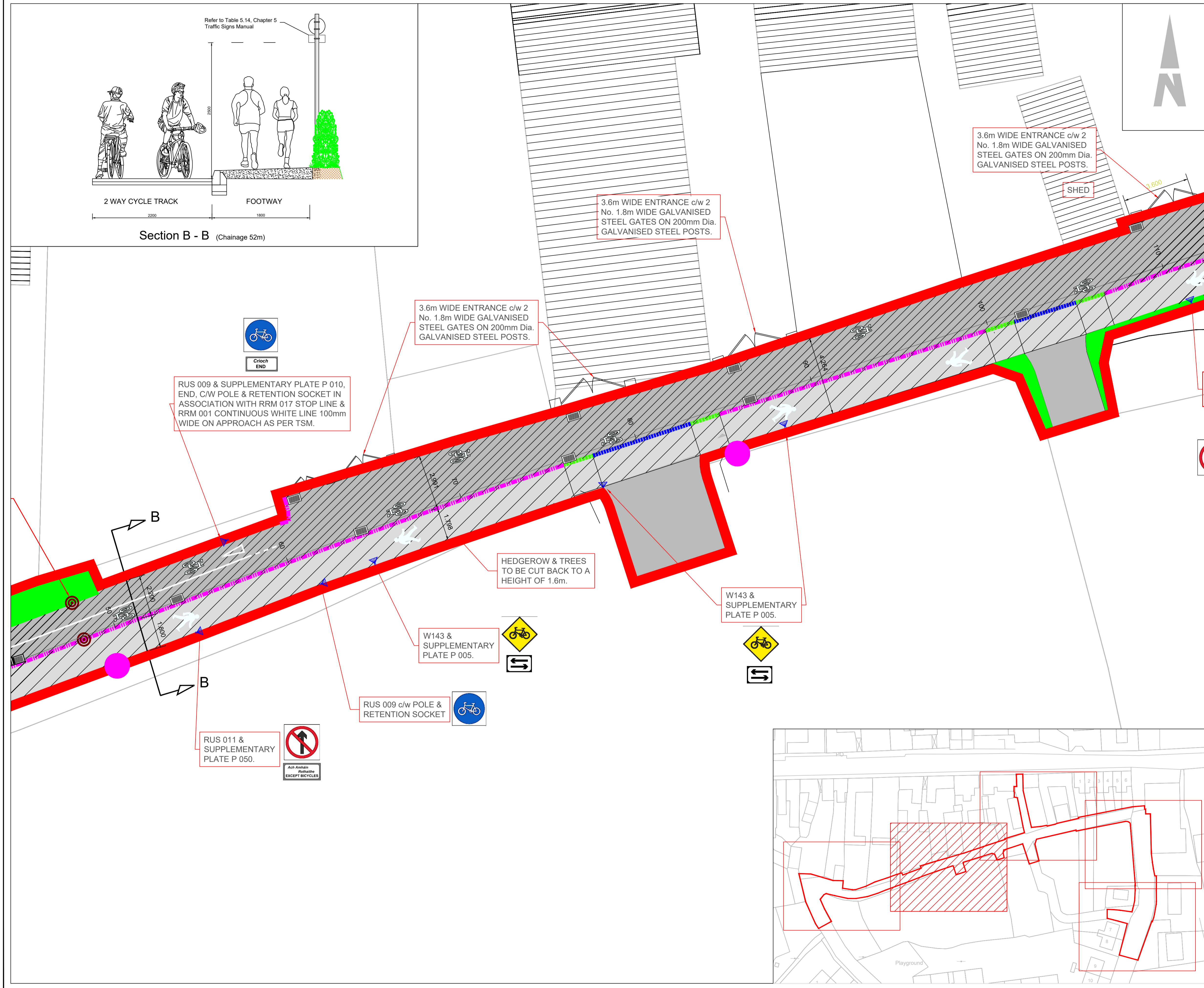
Section
ROADS DEPARTMENT
ACTIVE TRAVEL

Project
CARRIGALLEN PERMEABILITY LINK PROJECT, CO. LEITRIM

Drawing Title
Chainage 45m - 110m.

Drawn/Design	MG	Date	01.12.2025	Scales	1:100 @ A1
Checked	MG	Approved	MG		

Drawing No. **LM 25 0002-3 - Carrigallen** Rev **R02**



RUS 009 & SUPPLEMENTARY PLATE P 010, END, C/W POLE & RETENTION SOCKET IN ASSOCIATION WITH RRM 017 STOP LINE & RRM 001 CONTINUOUS WHITE LINE 100mm WIDE ON APPROACH AS PER TSM.

3.6m WIDE ENTRANCE c/w 2 No. 1.8m WIDE GALVANISED STEEL GATES ON 200mm Dia. GALVANISED STEEL POSTS.

3.6m WIDE ENTRANCE c/w 2 No. 1.8m WIDE GALVANISED STEEL GATES ON 200mm Dia. GALVANISED STEEL POSTS.

3.6m WIDE ENTRANCE c/w 2 No. 1.8m WIDE GALVANISED STEEL GATES ON 200mm Dia. GALVANISED STEEL POSTS.

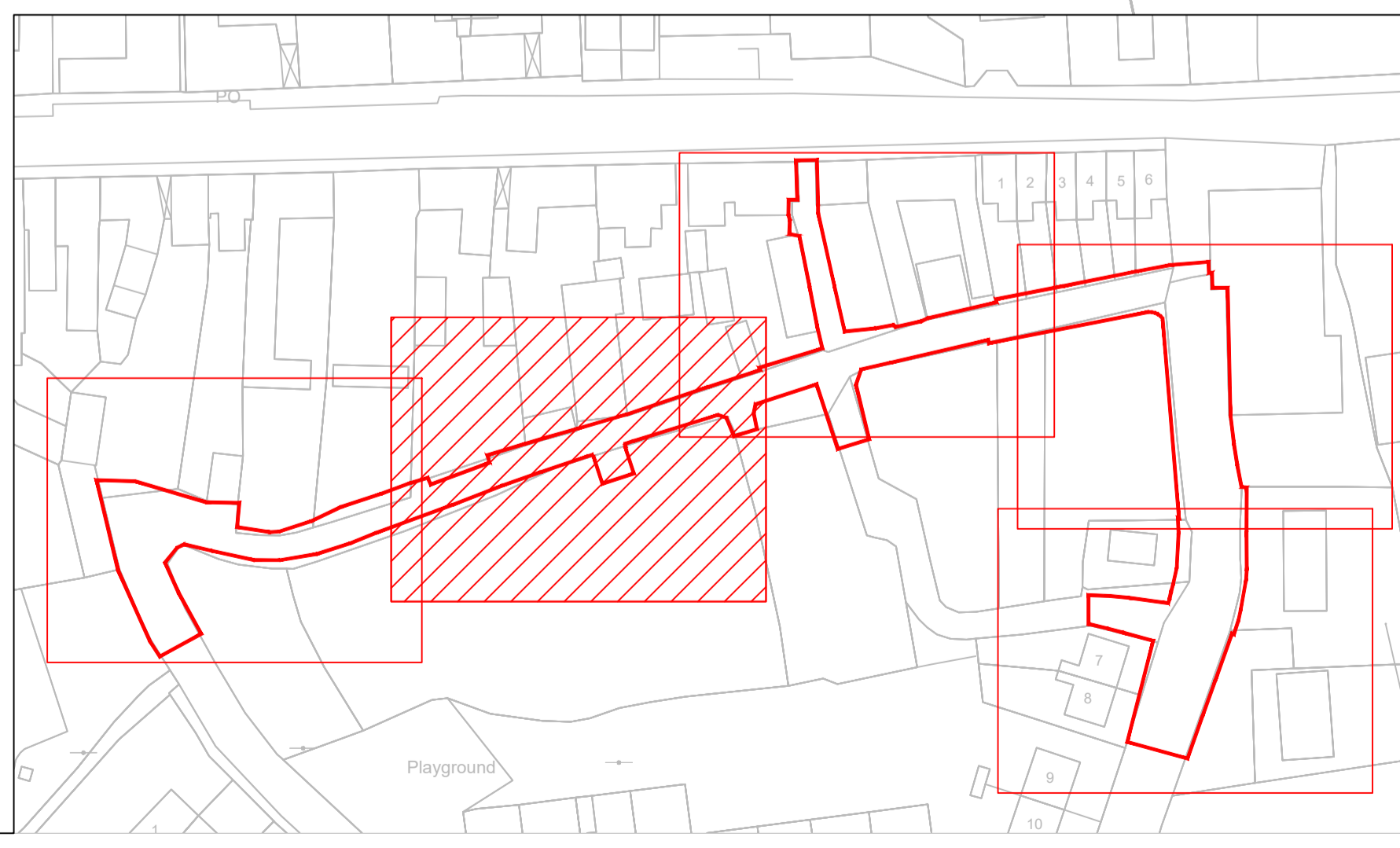
HEDGEROW & TREES TO BE CUT BACK TO A HEIGHT OF 1.6m.

W143 & SUPPLEMENTARY PLATE P 005.

W143 & SUPPLEMENTARY PLATE P 005.

RUS 009 c/w POLE & RETENTION SOCKET

RUS 011 & SUPPLEMENTARY PLATE P 050.



© COPYRIGHT OF THIS DRAWING IS RESERVED BY LEITRIM COUNTY COUNCIL. NO PART SHALL BE REPRODUCED OR TRANSMITTED WITHOUT THEIR WRITTEN PERMISSION.

NO CHANGES OF WHATSOEVER NATURE ARE TO BE MADE TO ANY DETAILS SET OUT OR CONTAINED IN ANY LEITRIM COUNTY COUNCIL SPECIFICATIONS OR DRAWINGS UNLESS THE EXPRESS CONSENT HAS BEEN OBTAINED IN ADVANCE, IN WRITING, FROM LEITRIM COUNTY COUNCIL.

NOTES

- GENERAL NOTES:**
1. MAPS ARE PRODUCED UNDER LICENCE FROM ORDNANCE SURVEY IRELAND © NATIONAL MAPPING DIVISION OF TAILTE ÉIREANN. LICENCE NO. CYAL5041413
 2. THIS DRAWING IS TO BE READ IN CONJUNCTION WITH ALL RELEVANT ENGINEER'S, ARCHITECT'S AND SPECIALIST'S DRAWINGS AND THE SPECIFICATION.
 3. DO NOT SCALE FROM THIS DRAWING MANUALLY OR ELECTRONICALLY. ALL WORKS SHALL BE CONSTRUCTED IN ACCORDANCE WITH THE WORKS REQUIREMENTS.
 4. ALL DIMENSIONS IN METRES UNLESS SPECIFIED OTHERWISE.
 5. ALL CO-ORDINATES ARE TO IRISH TRANSVERSE MERCATOR.
 6. ALL LEVELS ARE TO ORDNANCE DATUM (MALIN HEAD).
 7. ALL TEMPORARY TRAFFIC & OPERATIONS MANAGEMENT SHALL COMPLY FULLY WITH THE WORKS REQUIREMENTS.
 8. THE CONTRACTOR MUST LIAISE DIRECTLY WITH LOCAL AUTHORITY DEPARTMENTS AS DIRECTED IN THE WORKS REQUIREMENTS.
 9. ALL VEHICULAR & PEDESTRIAN, CYCLE & PRIVATE ACCESS ROUTES WITHIN AND SURROUNDING THE WORKS EXTENTS MUST BE MAINTAINED THROUGHOUT THE WORKS IN ACCORDANCE WITH THE CONTRACTORS APPROVED TEMPORARY TRAFFIC & OPERATIONS MANAGEMENT PLAN.
- ROADS NOTES:**
10. ALL WORKS TO BE CONSTRUCTED IN ACCORDANCE WITH THE TII SPECIFICATION FOR ROAD WORKS UNLESS OVERRIDDEN BY LOCAL OVERSEEING AUTHORITY'S STANDARDS.
 11. ALL ROAD MARKINGS & SIGNS SHALL COMPLY FULLY WITH THE TRAFFIC SIGNS MANUAL, PUBLISHED BY THE DEPARTMENT OF TRANSPORT.
 12. SIGNS & MARKINGS: CONTRACTOR TO CONFIRM PRECISE SETTING OUT WITH EMPLOYERS REPRESENTATIVE PRIOR TO COMPLETION.
 13. ALL TRAFFIC MANAGEMENT TO COMPLY FULLY WITH THE PROVISIONS OF CHAPTER 8 OF THE TRAFFIC SIGNS MANUAL.
 14. BOLLARDS WITHIN FOOTPATH TO BE SET-BACK 300mm FROM CARRIAGEWAY EDGE.
- SERVICES NOTES:**
15. ALL DRAWINGS TO BE CHECKED BY CONTRACTOR ON SITE AND ENGINEER INFORMED OF DISCREPANCIES BEFORE WORK COMMENCES.
 16. CONTRACTOR SHALL SATISFY HIMSELF AS TO THE ACCURACY OF PAVEMENT LEVELS ON SITE PRIOR TO COMMENCEMENT OF WORKS ON SITE.

FEATURES KEY

- SITE BOUNDARY
- DOUBLE YELLOW LINES TO TSM
- PRE-CAST KERB 125mm IN HEIGHT
- PRE-CAST KERB 25mm IN HEIGHT (Vehicle Access)
- PRE-CAST KERB 0-6mm IN HEIGHT (Pedestrians)
- TRANSITION KERB
- CONCRETE FOOTPATH TO TII CC-SCD-01105 (TYPE 1), WIDTH VARIES.
- REMOVE EXISTING, NEW 1.2M HIGH, TREATED TIMBER CLOSE BOARDED FENCE.
- RESURFACED CYCLE LANE / CARRIAGEWAY.
- NEW GRASS VERGE SOILED & SEEDED.
- DECOMMISSION PUBLIC LIGHTING COLUMN x 1 No.
- PROPOSED PUBLIC LIGHTING x 8 No.
- BLACK BOLLARD
- NEW PRECAST CONCRETE GULLY C/W GRATING & FRAME CONNECTED TO EXISTING DRAINAGE NETWORK.

R04	XX.XX.2025	ISSUED FOR TENDER	MG	MG
R03	14.03.2025	ISSUED FOR PLANNING	MG	MG
R02	28.02.2025	REVISIONS POST RSA REPORT	MG	MG
R01	10.01.2025	FIRST ISSUE	MG	MG

Issue	Date	Description	Made	Checked
Drawing Status:				

TENDER

NTA
Udarás Náisiúnta Iompar
National Transport Authority

Comhairle Chontae Leitrim
Leitrim County Council

Park Lane House, Priests Lane, Carrick on Shannon Co. Leitrim, N41 RX53
Tel: 071 9620005
Website: www.Leitrimcoco.ie

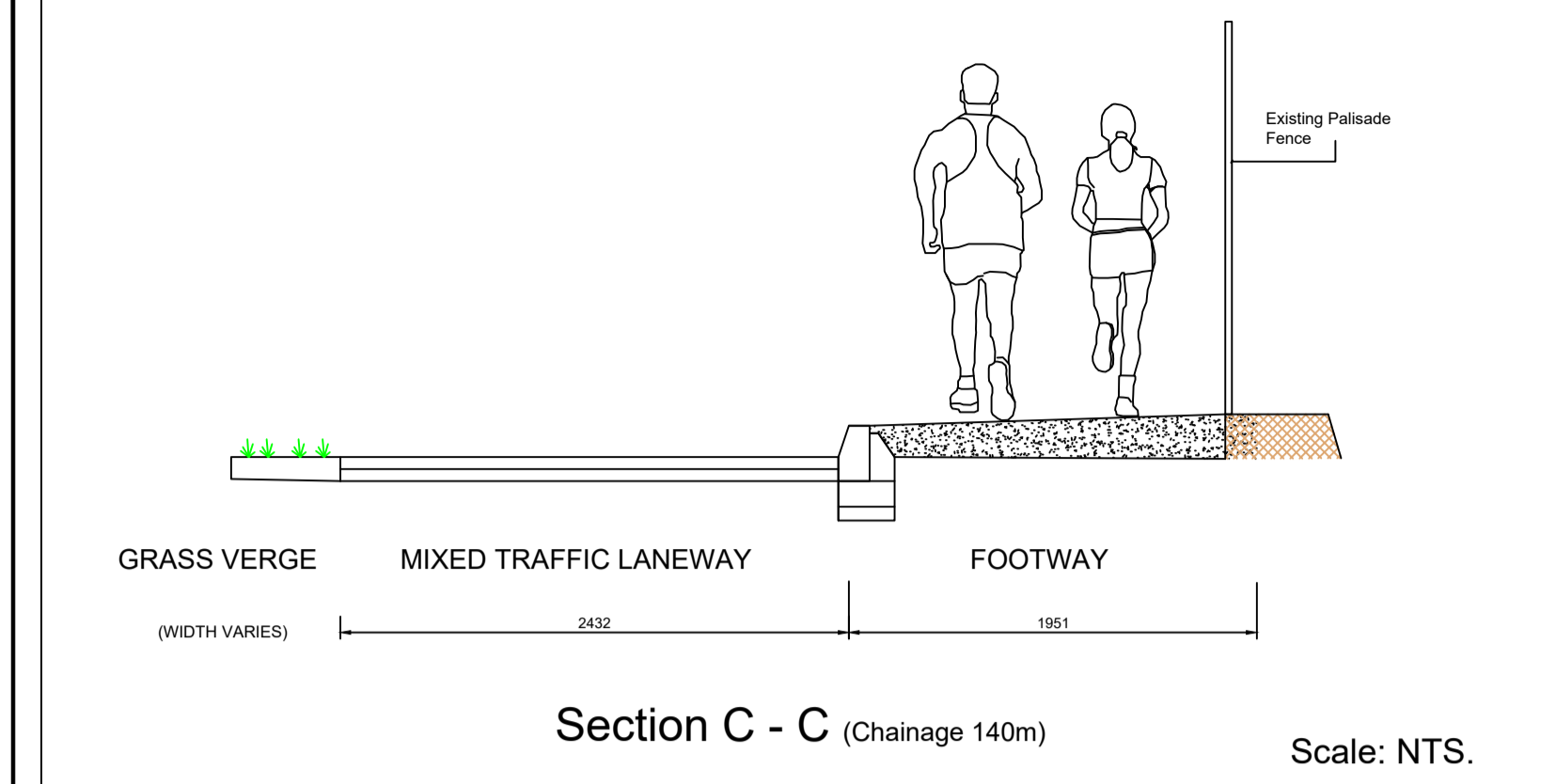
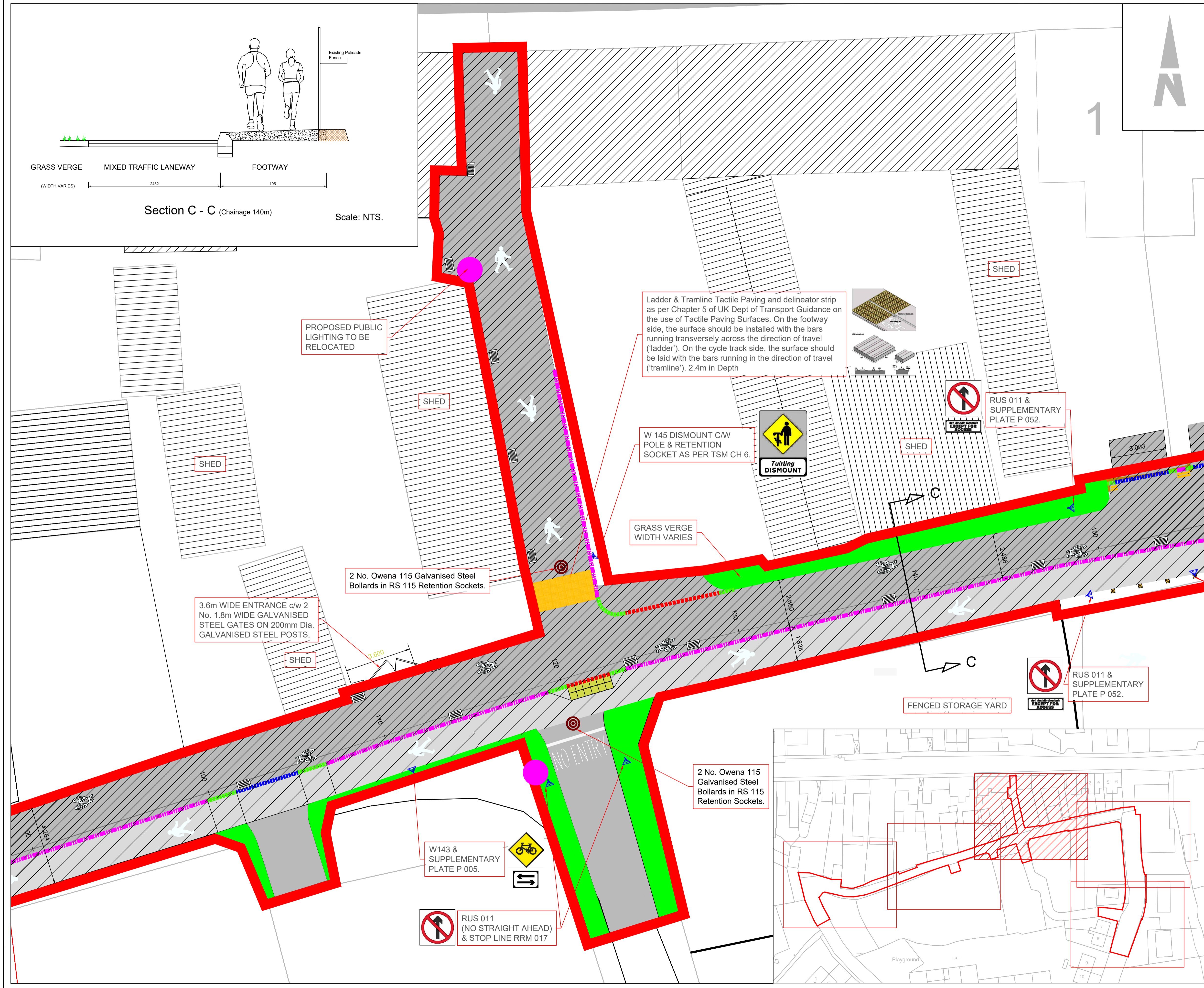
Section
**ROADS DEPARTMENT
ACTIVE TRAVEL**

Project
**CARRIGALLEN PERMEABILITY
LINK PROJECT,
CO. LEITRIM**

Drawing Title
Chainage 110m - 160m.

Drawn/Design	MG	Date	01.12.2025	Scales	1:100 @ A1
Checked	MG	Approved	MG		

Drawing No. **LM 25 0002-4 - Carrigallen** Rev **R02**



© COPYRIGHT OF THIS DRAWING IS RESERVED BY LEITRIM COUNTY COUNCIL. NO PART SHALL BE REPRODUCED OR TRANSMITTED WITHOUT THEIR WRITTEN PERMISSION.

NO CHANGES OF WHATSOEVER NATURE ARE TO BE MADE TO ANY DETAILS SET OUT OR CONTAINED IN ANY LEITRIM COUNTY COUNCIL SPECIFICATIONS OR DRAWINGS UNLESS THE EXPRESS CONSENT HAS BEEN OBTAINED IN ADVANCE, IN WRITING, FROM LEITRIM COUNTY COUNCIL.

NOTES

- GENERAL NOTES:**
- MAPS ARE PRODUCED UNDER LICENCE FROM ORDNANCE SURVEY IRELAND. © NATIONAL MAPPING DIVISION OF TAILTE EIREANN. LICENCE NO: CYL504113
 - THIS DRAWING IS TO BE READ IN CONJUNCTION WITH ALL RELEVANT ENGINEER'S, ARCHITECT'S AND SPECIALIST'S DRAWINGS AND THE SPECIFICATION.
 - DO NOT SCALE FROM THIS DRAWING MANUALLY OR ELECTRONICALLY. ALL WORKS SHALL BE CONSTRUCTED IN ACCORDANCE WITH THE WORKS REQUIREMENTS.
 - ALL DIMENSIONS IN METRES UNLESS SPECIFIED OTHERWISE.
 - ALL CO-ORDINATES ARE TO IRISH TRANSVERSE MERCATOR.
 - ALL LEVELS ARE TO ORDNANCE DATUM (MALIN HEAD).
 - ALL TEMPORARY TRAFFIC & OPERATIONS MANAGEMENT SHALL COMPLY FULLY WITH THE WORKS REQUIREMENTS.
 - THE CONTRACTOR MUST LIAISE DIRECTLY WITH LOCAL AUTHORITY DEPARTMENTS AS DIRECTED IN THE WORKS REQUIREMENTS.
 - ALL VEHICULAR & PEDESTRIAN, CYCLE & PRIVATE ACCESS ROUTES WITHIN AND SURROUNDING THE WORKS EXTENTS MUST BE MAINTAINED THROUGHOUT THE WORKS IN ACCORDANCE WITH THE CONTRACTORS APPROVED TEMPORARY TRAFFIC & OPERATIONS MANAGEMENT PLAN.
- ROADS NOTES:**
- ALL WORKS TO BE CONSTRUCTED IN ACCORDANCE WITH THE TII SPECIFICATION FOR ROAD WORKS UNLESS OVERRIDDEN BY LOCAL OVERSEEING AUTHORITY'S STANDARDS.
 - ALL ROAD MARKINGS & SIGNS SHALL COMPLY FULLY WITH THE TRAFFIC SIGNS MANUAL, PUBLISHED BY THE DEPARTMENT OF TRANSPORT.
 - SIGNS & MARKINGS: CONTRACTOR TO CONFIRM PRECISE SETTING OUT WITH EMPLOYERS REPRESENTATIVE PRIOR TO COMPLETION.
 - ALL TRAFFIC MANAGEMENT TO COMPLY FULLY WITH THE PROVISIONS OF CHAPTER 8 OF THE TRAFFIC SIGNS MANUAL.
 - BOLLARDS WITHIN FOOTPATH TO BE SET-BACK 300mm FROM CARRIAGEWAY EDGE.
- SERVICES NOTES:**
- ALL DRAWINGS TO BE CHECKED BY CONTRACTOR ON SITE AND ENGINEER INFORMED OF DISCREPANCIES BEFORE WORK COMMENCES.
 - CONTRACTOR SHALL SATISFY HIMSELF AS TO THE ACCURACY OF PAVEMENT LEVELS ON SITE PRIOR TO COMMENCEMENT OF WORKS ON SITE.

- FEATURES KEY**
- SITE BOUNDARY
 - DOUBLE YELLOW LINES TO TSM
 - PRE-CAST KERB 125mm IN HEIGHT
 - PRE-CAST KERB 25mm IN HEIGHT (Vehicle Access)
 - PRE-CAST KERB 0-6mm IN HEIGHT (Pedestrians)
 - TRANSITION KERB
 - CONCRETE FOOTPATH TO TII CC-SCD-01105 (TYPE 1), WIDTH VARIES.
 - REMOVE EXISTING, NEW 1.2M HIGH, TREATED TIMBER CLOSE BOARDED FENCE.
 - RESURFACED CYCLE LANE / CARRIAGEWAY.
 - NEW GRASS VERGE SOILED & SEEDED.
 - DECOMMISSION PUBLIC LIGHTING COLUMN x 1 No.
 - PROPOSED PUBLIC LIGHTING x 8 No.
 - BLACK BOLLARD
 - NEW PRECAST CONCRETE GULLY CW GRATING & FRAME CONNECTED TO EXISTING DRAINAGE NETWORK.

R04	XX.XX.2025	ISSUED FOR TENDER	MG	MG
R03	14.03.2025	ISSUED FOR PLANNING	MG	MG
R02	28.02.2025	REVISIONS POST RSA REPORT	MG	MG
R01	10.01.2025	FIRST ISSUE	MG	MG

Issue	Date	Description	Made	Checked
Drawing Status: TENDER				

NTA
Udarás Náisiúnta Iompair
National Transport Authority

Comhairle Chontae Liatroma
Leitrim County Council

Park Lane House, Priests Lane, Carrick on Shannon Co. Leitrim, N41 RX53
Tel: 071 9620005
Website: www.Leitrimcoco.ie

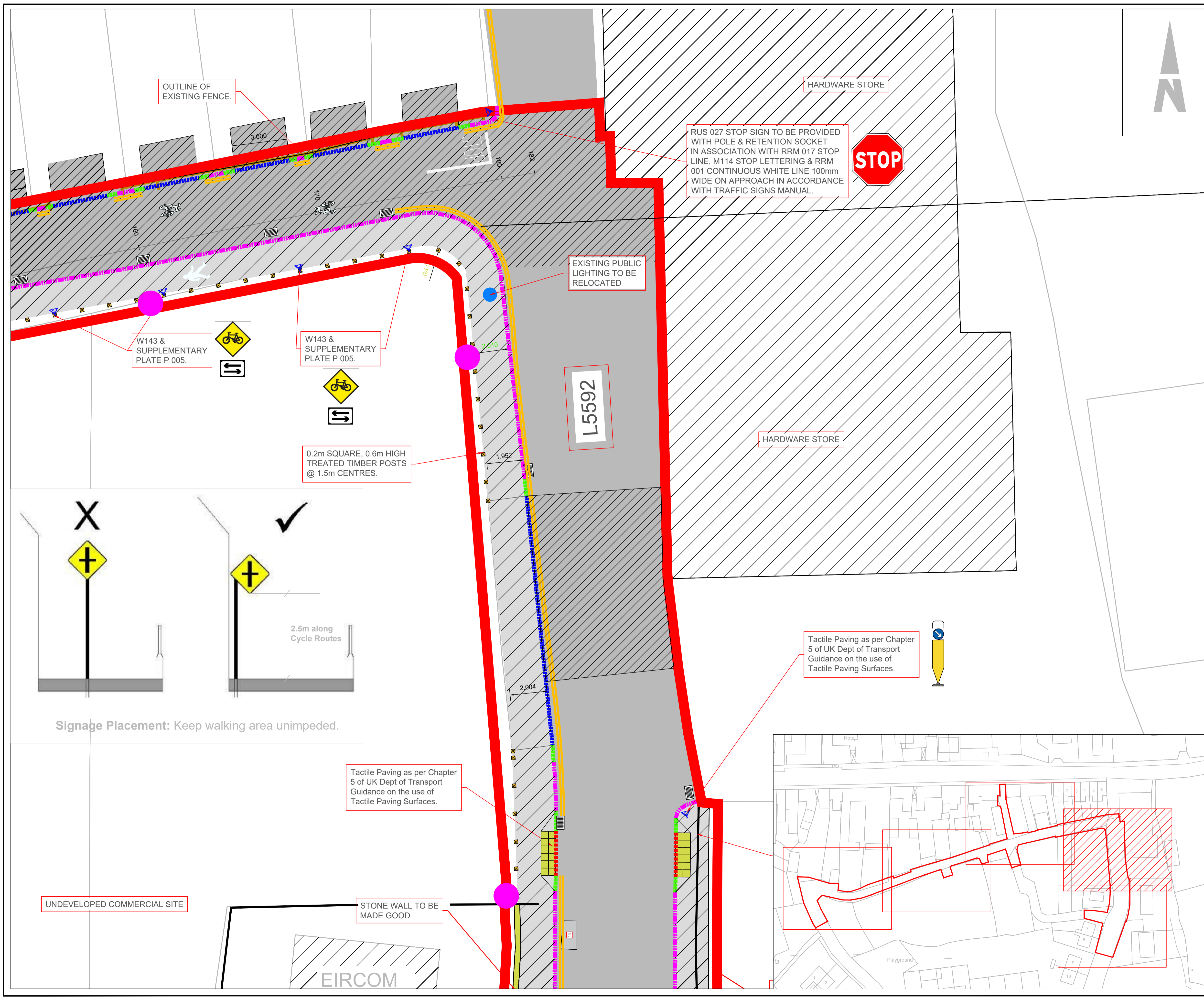
Section
ROADS DEPARTMENT
ACTIVE TRAVEL

Project
CARRIGALLEN PERMEABILITY LINK PROJECT, CO. LEITRIM

Drawing Title
Chainage 160m - 180m & Local Road - L5592.

Drawn/Design	MG	Date	01.12.2025	Scales	1:100 @ A1
Checked	MG	Approved	MG		

Drawing No. **LM 25 0002-5 - Carrigallen** Rev **R02**



Signage Placement: Keep walking area unimpeded.

2.5m along Cycle Routes

Tactile Paving as per Chapter 5 of UK Dept of Transport Guidance on the use of Tactile Paving Surfaces.

Tactile Paving as per Chapter 5 of UK Dept of Transport Guidance on the use of Tactile Paving Surfaces.

UNDEVELOPED COMMERCIAL SITE

STONE WALL TO BE MADE GOOD

L5592



OUTLINE OF EXISTING FENCE.

HARDWARE STORE

RUS 027 STOP SIGN TO BE PROVIDED WITH POLE & RETENTION SOCKET IN ASSOCIATION WITH RRM 017 STOP LINE, M114 STOP LETTERING & RRM 001 CONTINUOUS WHITE LINE 100mm WIDE ON APPROACH IN ACCORDANCE WITH TRAFFIC SIGNS MANUAL.

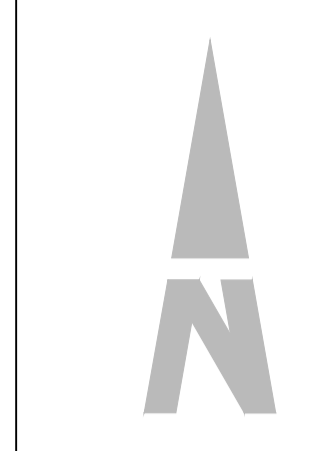
EXISTING PUBLIC LIGHTING TO BE RELOCATED

W143 & SUPPLEMENTARY PLATE P 005.

W143 & SUPPLEMENTARY PLATE P 005.

0.2m SQUARE, 0.6m HIGH TREATED TIMBER POSTS @ 1.5m CENTRES.

HARDWARE STORE



© COPYRIGHT OF THIS DRAWING IS RESERVED BY LEITRIM COUNTY COUNCIL. NO PART SHALL BE REPRODUCED OR TRANSMITTED WITHOUT THEIR WRITTEN PERMISSION.

NO CHANGES OF WHATSOEVER NATURE ARE TO BE MADE TO ANY DETAILS SET OUT OR CONTAINED IN ANY LEITRIM COUNTY COUNCIL SPECIFICATIONS OR DRAWINGS UNLESS THE EXPRESS CONSENT HAS BEEN OBTAINED IN ADVANCE, IN WRITING, FROM LEITRIM COUNTY COUNCIL.

NOTES

- GENERAL NOTES:**
1. MAPS ARE PRODUCED UNDER LICENCE FROM ORDNANCE SURVEY IRELAND © NATIONAL MAPPING DIVISION OF TAILTE EIREANN. LICENCE NO. CYL5041413
 2. THIS DRAWING IS TO BE READ IN CONJUNCTION WITH ALL RELEVANT ENGINEER'S, ARCHITECT'S AND SPECIALIST'S DRAWINGS AND THE SPECIFICATION.
 3. DO NOT SCALE FROM THIS DRAWING MANUALLY OR ELECTRONICALLY. ALL WORKS SHALL BE CONSTRUCTED IN ACCORDANCE WITH THE WORKS REQUIREMENTS.
 4. ALL DIMENSIONS IN METRES UNLESS SPECIFIED OTHERWISE.
 5. ALL CO-ORDINATES ARE TO IRISH TRANSVERSE MERCATOR.
 6. ALL LEVELS ARE TO ORDNANCE DATUM (MALIN HEAD).
 7. ALL TEMPORARY TRAFFIC & OPERATIONS MANAGEMENT SHALL COMPLY FULLY WITH THE WORKS REQUIREMENTS.
 8. THE CONTRACTOR MUST LIAISE DIRECTLY WITH LOCAL AUTHORITY DEPARTMENTS AS DIRECTED IN THE WORKS REQUIREMENTS.
 9. ALL VEHICULAR & PEDESTRIAN, CYCLE & PRIVATE ACCESS ROUTES WITHIN AND SURROUNDING THE WORKS EXTENTS MUST BE MAINTAINED THROUGHOUT THE WORKS IN ACCORDANCE WITH THE CONTRACTORS APPROVED TEMPORARY TRAFFIC & OPERATIONS MANAGEMENT PLAN.
- ROADS NOTES:**
10. ALL WORKS TO BE CONSTRUCTED IN ACCORDANCE WITH THE TII SPECIFICATION FOR ROAD WORKS UNLESS OVERRIDDEN BY LOCAL OVERSEEING AUTHORITY'S STANDARDS.
 11. ALL ROAD MARKINGS & SIGNS SHALL COMPLY FULLY WITH THE TRAFFIC SIGNS MANUAL, PUBLISHED BY THE DEPARTMENT OF TRANSPORT.
 12. SIGNS & MARKINGS: CONTRACTOR TO CONFIRM PRECISE SETTING OUT WITH EMPLOYERS REPRESENTATIVE PRIOR TO COMPLETION.
 13. ALL TRAFFIC MANAGEMENT TO COMPLY FULLY WITH THE PROVISIONS OF CHAPTER 8 OF THE TRAFFIC SIGNS MANUAL.
 14. BOLLARDS WITHIN FOOTPATH TO BE SET-BACK 300mm FROM CARRIAGEWAY EDGE.
- SERVICES NOTES:**
15. ALL DRAWINGS TO BE CHECKED BY CONTRACTOR ON SITE AND ENGINEER INFORMED OF DISCREPANCIES BEFORE WORK COMMENCES.
 16. CONTRACTOR SHALL SATISFY HIMSELF AS TO THE ACCURACY OF PAVEMENT LEVELS ON SITE PRIOR TO COMMENCEMENT OF WORKS ON SITE.

FEATURES KEY

- SITE BOUNDARY
- DOUBLE YELLOW LINES TO TSM
- PRE-CAST KERB 125mm IN HEIGHT
- PRE-CAST KERB 25mm IN HEIGHT (Vehicle Access)
- PRE-CAST KERB 0-6mm IN HEIGHT (Pedestrians)
- TRANSITION KERB
- CONCRETE FOOTPATH TO TII CC-SCD-01105 (TYPE 1), WIDTH VARIES.
- REMOVE EXISTING, NEW 1.2M HIGH, TREATED TIMBER CLOSE BOARDED FENCE.
- RESURFACED CYCLE LANE / CARRIAGEWAY.
- NEW GRASS VERGE SOILED & SEEDED.
- DECOMMISSION PUBLIC LIGHTING COLUMN x 1 No.
- PROPOSED PUBLIC LIGHTING x 8 No.
- BLACK BOLLARD
- NEW PRECAST CONCRETE GULLY CW GRATING & FRAME CONNECTED TO EXISTING DRAINAGE NETWORK.

R04	XX.XX.2025	ISSUED FOR TENDER	MG	MG
R03	14.03.2025	ISSUED FOR PLANNING	MG	MG
R02	28.02.2025	REVISIONS POST RSA REPORT	MG	MG
R01	10.01.2025	FIRST ISSUE	MG	MG

Issue	Date	Description	Made	Checked
-------	------	-------------	------	---------

Drawing Status: **TENDER**

NTA
Udarás Náisiúnta Iompair
National Transport Authority

Comhairle Chontae Liatroma
Leitrim County Council

Park Lane House, Priests Lane, Carrick on Shannon Co. Leitrim, N41 RX53
Tel: 071 9620005
Website: www.Leitrimcoco.ie

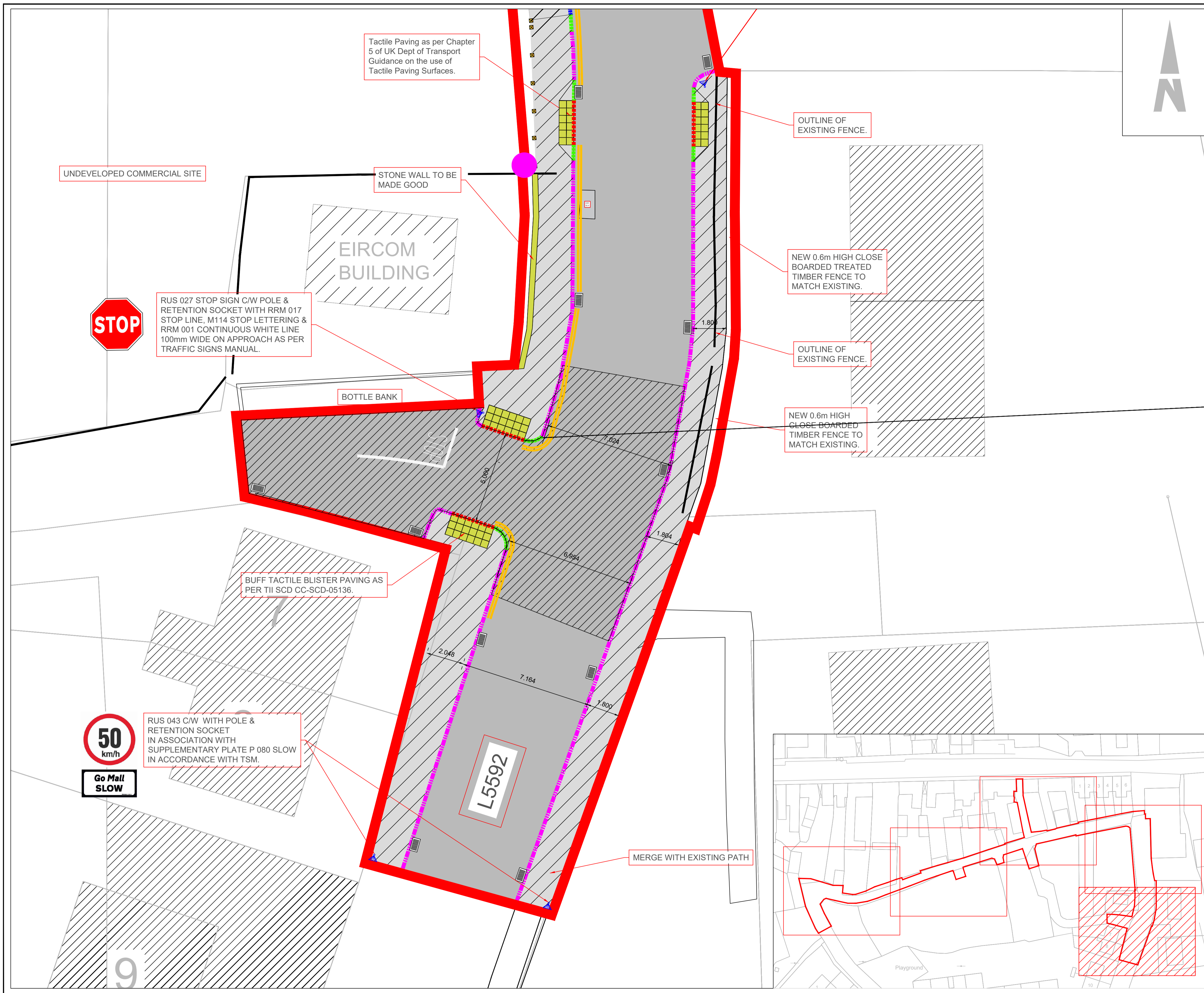
Section
ROADS DEPARTMENT
ACTIVE TRAVEL

Project
CARRIGALLEN PERMEABILITY LINK PROJECT, CO. LEITRIM

Drawing Title
Local Road - L5592.

Drawn/Design	MG	Date	01.12.2025	Scales	1:100 @ A1
Checked	MG	Approved	MG		

Drawing No. **LM 25 0002-6 - Carrigallen** Rev **R02**



© COPYRIGHT OF THIS DRAWING IS RESERVED BY LEITRIM COUNTY COUNCIL. NO PART SHALL BE REPRODUCED OR TRANSMITTED WITHOUT THEIR WRITTEN PERMISSION.

NO CHANGES OF WHATSOEVER NATURE ARE TO BE MADE TO ANY DETAILS SET OUT OR CONTAINED IN ANY LEITRIM COUNTY COUNCIL SPECIFICATIONS OR DRAWINGS UNLESS THE EXPRESS CONSENT HAS BEEN OBTAINED IN ADVANCE, IN WRITING, FROM LEITRIM COUNTY COUNCIL.

NOTES

- GENERAL NOTES:**
- MAPS ARE PRODUCED UNDER LICENCE FROM ORDNANCE SURVEY IRELAND © NATIONAL MAPPING DIVISION OF TALTE EIREANN. LICENCE NO: CYAL504113
 - THIS DRAWING IS TO BE READ IN CONJUNCTION WITH ALL RELEVANT ENGINEER'S, ARCHITECT'S AND SPECIALIST'S DRAWINGS AND THE SPECIFICATION.
 - DO NOT SCALE FROM THIS DRAWING MANUALLY OR ELECTRONICALLY. ALL WORKS SHALL BE CONSTRUCTED IN ACCORDANCE WITH THE WORKS REQUIREMENTS.
 - ALL DIMENSIONS IN METRES UNLESS SPECIFIED OTHERWISE.
 - ALL CO-ORDINATES ARE TO IRISH TRANSVERSE MERCATOR.
 - ALL LEVELS ARE TO ORDNANCE DATUM (MALIN HEAD).
 - ALL TEMPORARY TRAFFIC & OPERATIONS MANAGEMENT SHALL COMPLY FULLY WITH THE WORKS REQUIREMENTS.
 - THE CONTRACTOR MUST LIAISE DIRECTLY WITH LOCAL AUTHORITY DEPARTMENTS AS DIRECTED IN THE WORKS REQUIREMENTS.
 - ALL VEHICULAR & PEDESTRIAN, CYCLE & PRIVATE ACCESS ROUTES WITHIN AND SURROUNDING THE WORKS EXTENTS MUST BE MAINTAINED THROUGHOUT THE WORKS IN ACCORDANCE WITH THE CONTRACTORS APPROVED TEMPORARY TRAFFIC & OPERATIONS MANAGEMENT PLAN.
- ROADS NOTES:**
- ALL WORKS TO BE CONSTRUCTED IN ACCORDANCE WITH THE TII SPECIFICATION FOR ROAD WORKS UNLESS OVERRIDDEN BY LOCAL OVERSEEING AUTHORITY'S STANDARDS.
 - ALL ROAD MARKINGS & SIGNS SHALL COMPLY FULLY WITH THE TRAFFIC SIGNS MANUAL, PUBLISHED BY THE DEPARTMENT OF TRANSPORT.
 - SIGNS & MARKINGS: CONTRACTOR TO CONFIRM PRECISE SETTING OUT WITH EMPLOYERS REPRESENTATIVE PRIOR TO COMPLETION.
 - ALL TRAFFIC MANAGEMENT TO COMPLY FULLY WITH THE PROVISIONS OF CHAPTER 8 OF THE TRAFFIC SIGNS MANUAL.
 - BOLLARDS WITHIN FOOTPATH TO BE SET-BACK 300mm FROM CARRIAGEWAY EDGE.
- SERVICES NOTES:**
- ALL DRAWINGS TO BE CHECKED BY CONTRACTOR ON SITE AND ENGINEER INFORMED OF DISCREPANCIES BEFORE WORK COMMENCES.
 - CONTRACTOR SHALL SATISFY HIMSELF AS TO THE ACCURACY OF PAVEMENT LEVELS ON SITE PRIOR TO COMMENCEMENT OF WORKS ON SITE.

FEATURES KEY

- SITE BOUNDARY
- DOUBLE YELLOW LINES TO TSM
- PRE-CAST KERB 125mm IN HEIGHT
- PRE-CAST KERB 25mm IN HEIGHT (Vehicle Access)
- PRE-CAST KERB 0-6mm IN HEIGHT (Pedestrians)
- TRANSITION KERB
- CONCRETE FOOTPATH TO TII CC-SCD-01105 (TYPE 1), WIDTH VARIES.
- REMOVE EXISTING, NEW 1.2M HIGH, TREATED TIMBER CLOSE BOARDED FENCE.
- RESURFACED CYCLE LANE / CARRIAGEWAY.
- NEW GRASS VERGE SOILED & SEEDED.
- DECOMMISSION PUBLIC LIGHTING COLUMN x 1 No.
- PROPOSED PUBLIC LIGHTING x 8 No.
- BLACK BOLLARD
- NEW PRECAST CONCRETE GULLY G/W GRATING & FRAME CONNECTED TO EXISTING DRAINAGE NETWORK.

Issue	Date	Description	Made	Checked
R04	XX.XX.2025	ISSUED FOR TENDER	MG	MG
R03	14.03.2025	ISSUED FOR PLANNING	MG	MG
R02	28.02.2025	REVISIONS POST RSA REPORT	MG	MG
R01	10.01.2025	FIRST ISSUE	MG	MG

Drawing Status: **TENDER**

NTA Údarás Náisiúnta Iomparáil (National Transport Authority)

Comhairle Chontae Leitrim Leitrim County Council

Park Lane House, Priests Lane, Carrick on Shannon Co. Leitrim, N41 RX53
Tel: 071 9620005
Website: www.Leitrimcoco.ie

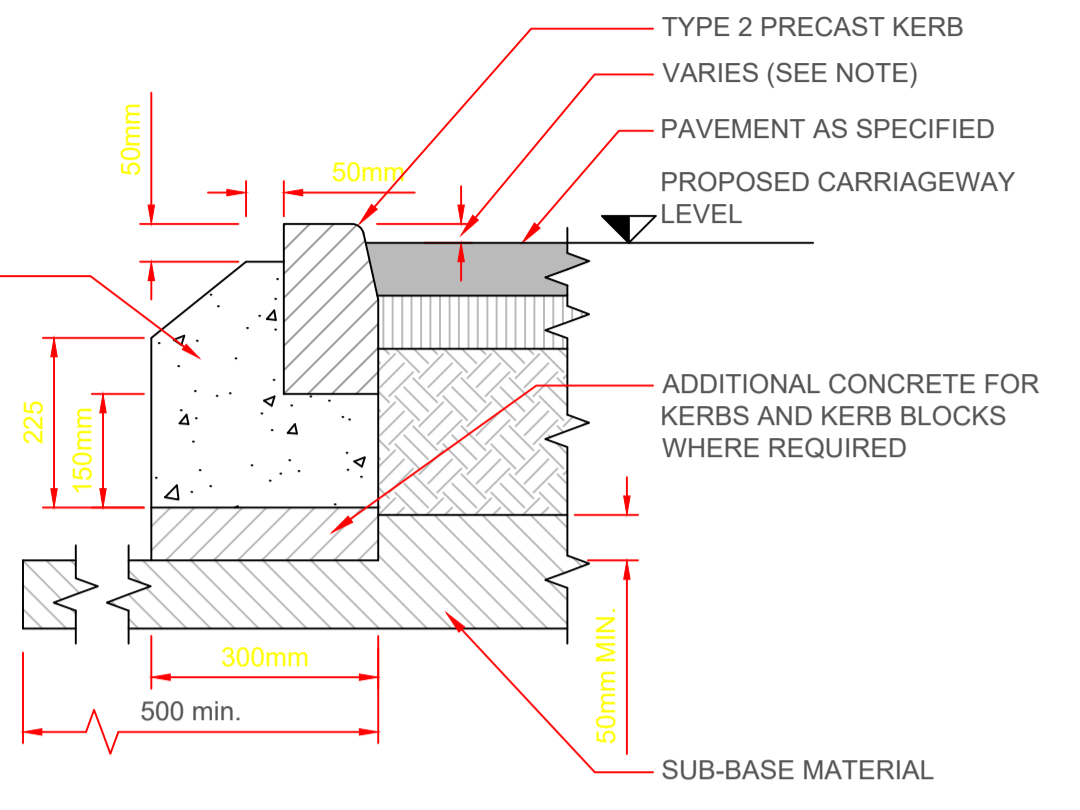
ROADS DEPARTMENT ACTIVE TRAVEL

Project: **CARRIGALLEN PERMEABILITY LINK PROJECT, CO. LEITRIM**

CONSTRUCTION DETAILS

Drawn/Design	MG	Date	19.06.2025	Scales	1:250 @ A1
Checked	MG	Approved	MG		1:500 @ A3

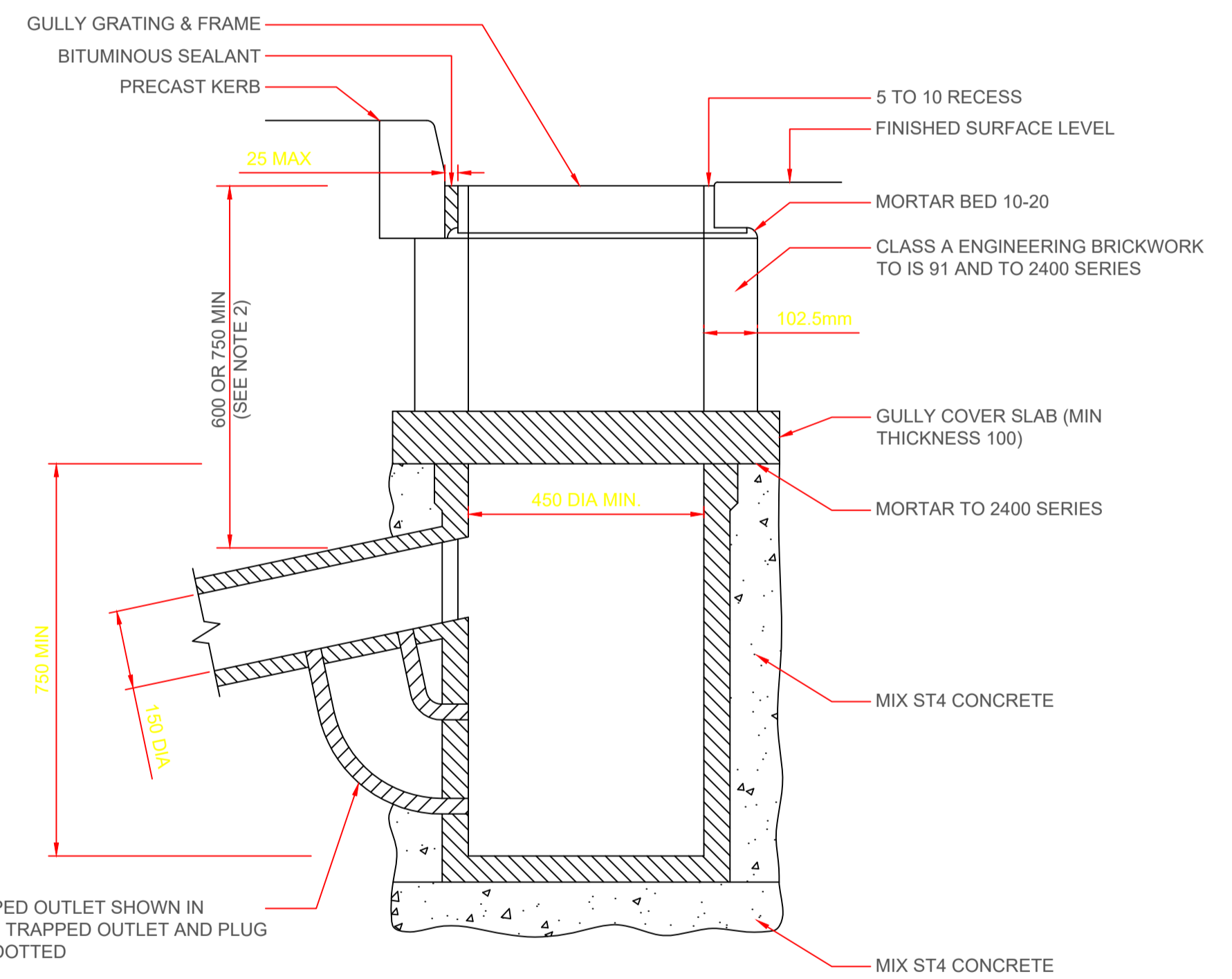
Drawing No. **LM 25 0002-7 - Carrigallen** Rev **R02**



NOTES.

- PRECAST KERBS SHALL BE LAID AND LEVELLED IN ACCORDANCE WITH B.S. 7533 : PART 4.
- A RAISED LIP OF 25mm SHOULD BE USED FOR VEHICULAR ENTRANCES
- A RAISED LIP OF 0-6mm SHOULD BE USED FOR PEDESTRIAN CROSSINGS

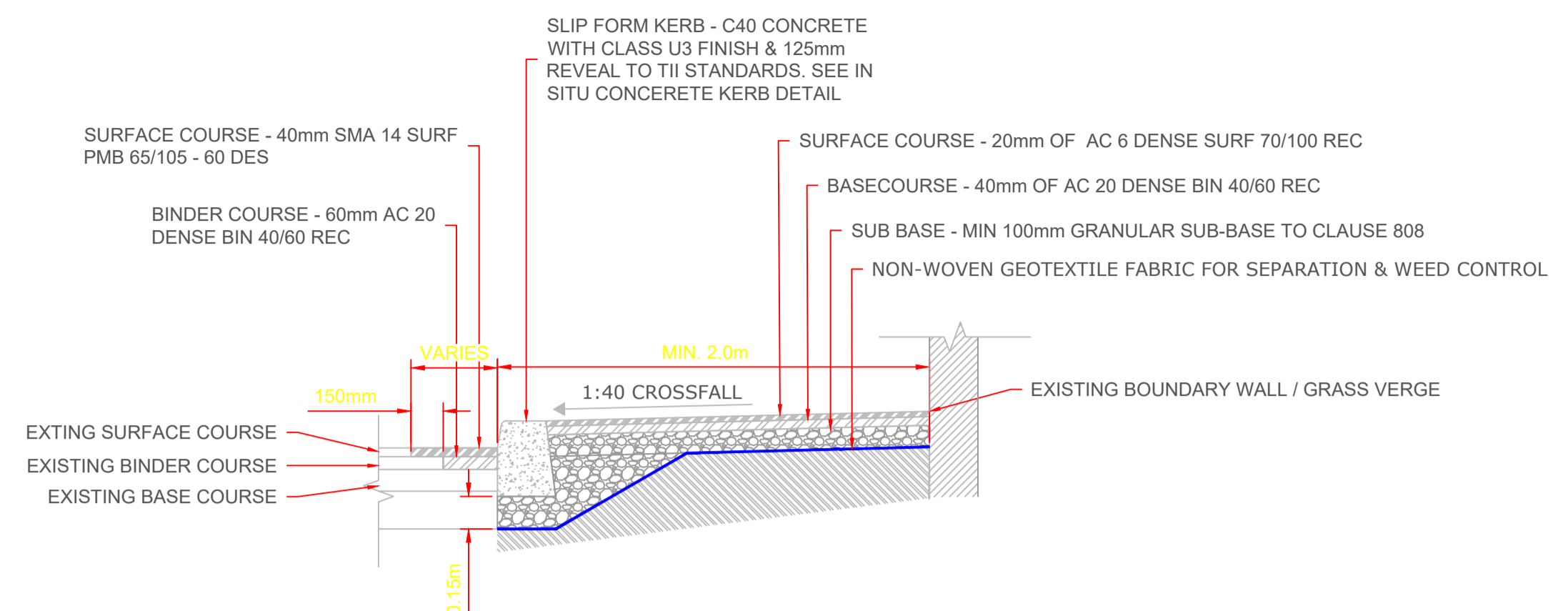
PRECAST CONCRETE KERB SCALE 1:10



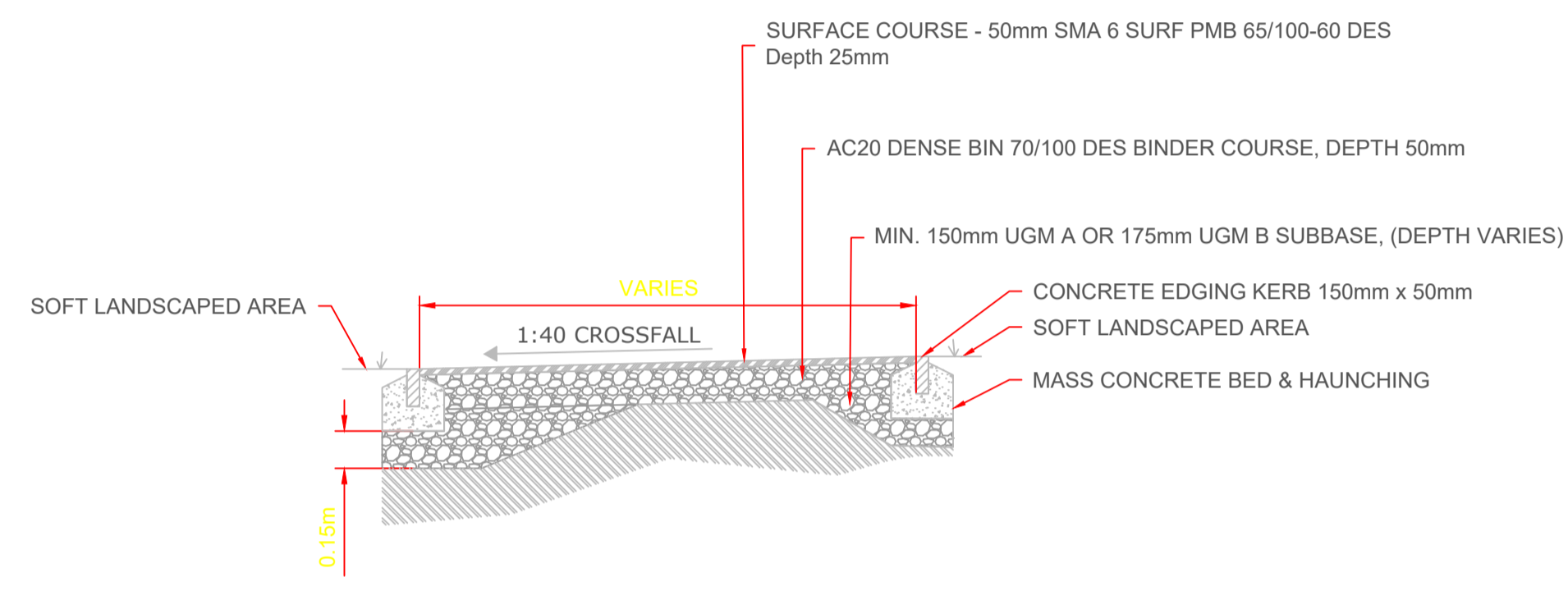
NOTES.

- THE MINIMUM DEPTH FROM THE TOP OF THE GRATING TO THE TOP OF THE GULLY OUTLET IS TO BE 750 WHEN THE CONNECTING PIPE IS UNDER A CARRIAGEWAY OR A HARD SHOULDER AND 600 ELSEWHERE
- PRECAST CONCRETE GULLIES AND COVER SLABS SHALL BE TO IS EN 1917 OR BS 5911-6.
- WHERE A GULLY HAS A TRAP THE STOPPERS SHALL COMPLY WITH THE REQUIREMENTS OF BS 5911-4 AND IS EN 1917
- GULLY GRATING TO COMPLY WITH IS EN 124
- GULLY GRATING TO BE PROVIDED WITH A LOCKING DEVICE

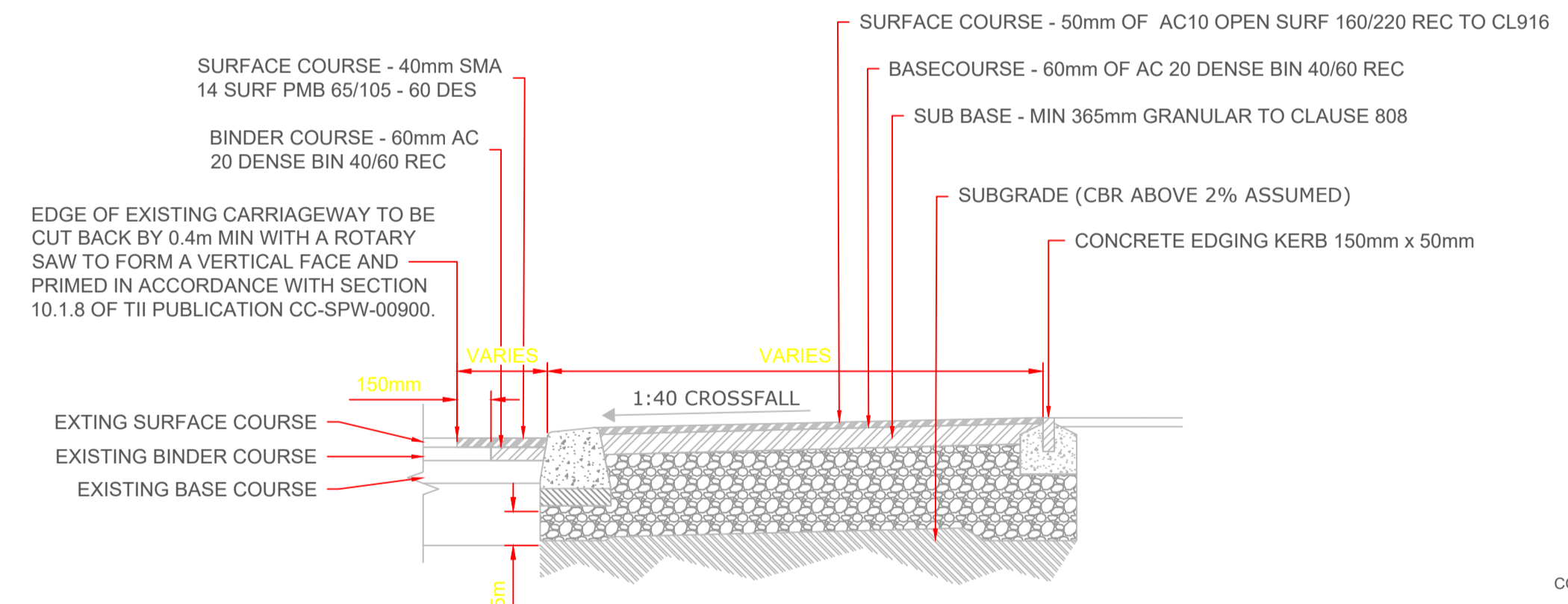
PRECAST CONCRETE GULLY SECTION SCALE 1:10



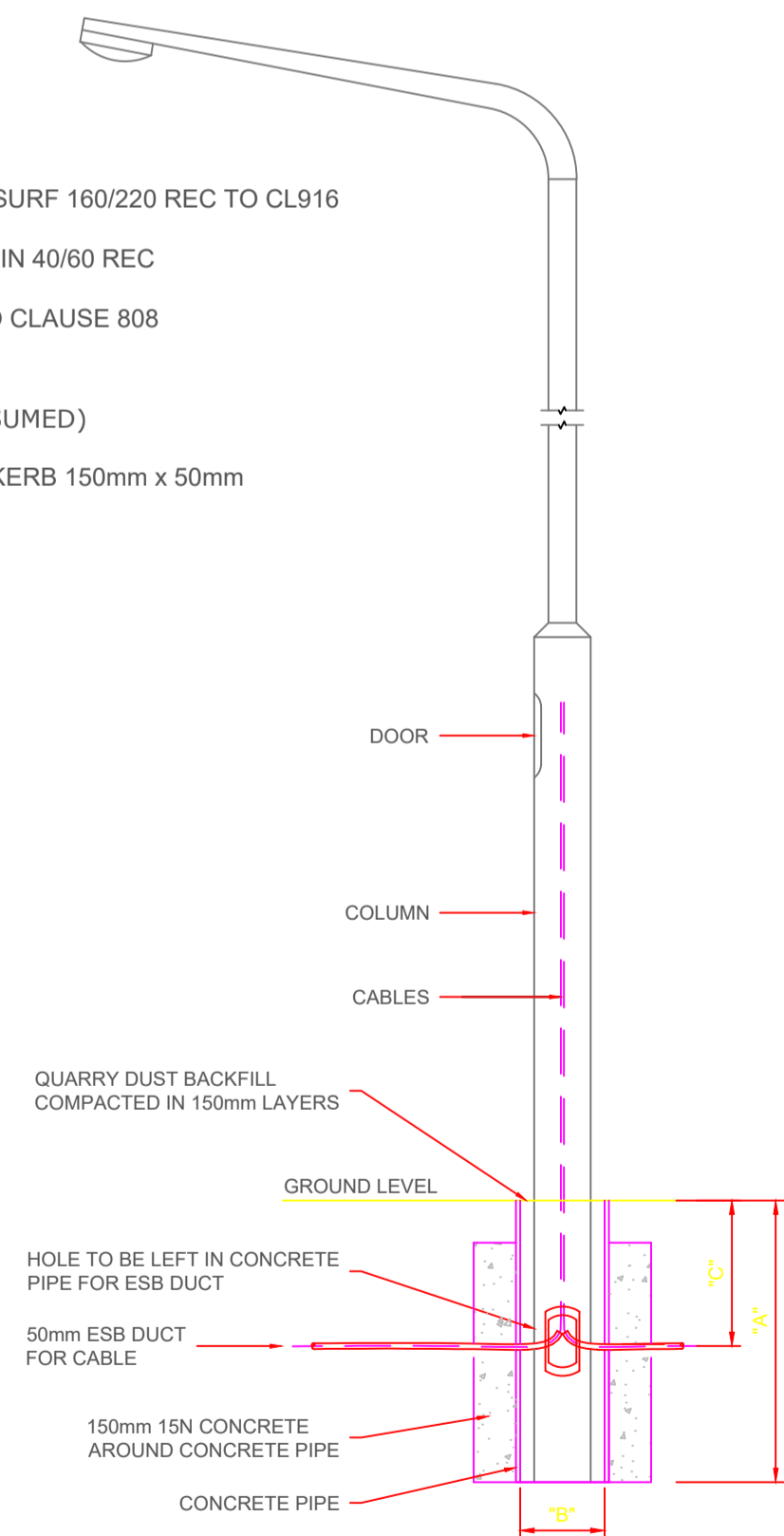
PEDESTRIAN ONLY FOOTPATH DETAIL SCALE 1:25



RESURFACING OF PEDESTRIAN & CYCLE TRACK DETAIL SCALE 1:25



VEHICLE ACCESS FOOTPATH DETAIL SCALE 1:25



	"A" Depth Of Pipe	"B" Dia. Of Pipe	"C" Depth Of Duct
6m Shaft	1000mm	300mm	500mm
8m Shaft	1500mm	375mm	500mm
10m Shaft	1800mm	400mm	500mm

LIGHTING COLUMN SOCKETS LIGHTING COLUMN FOUNDATION DETAIL N.T.S.