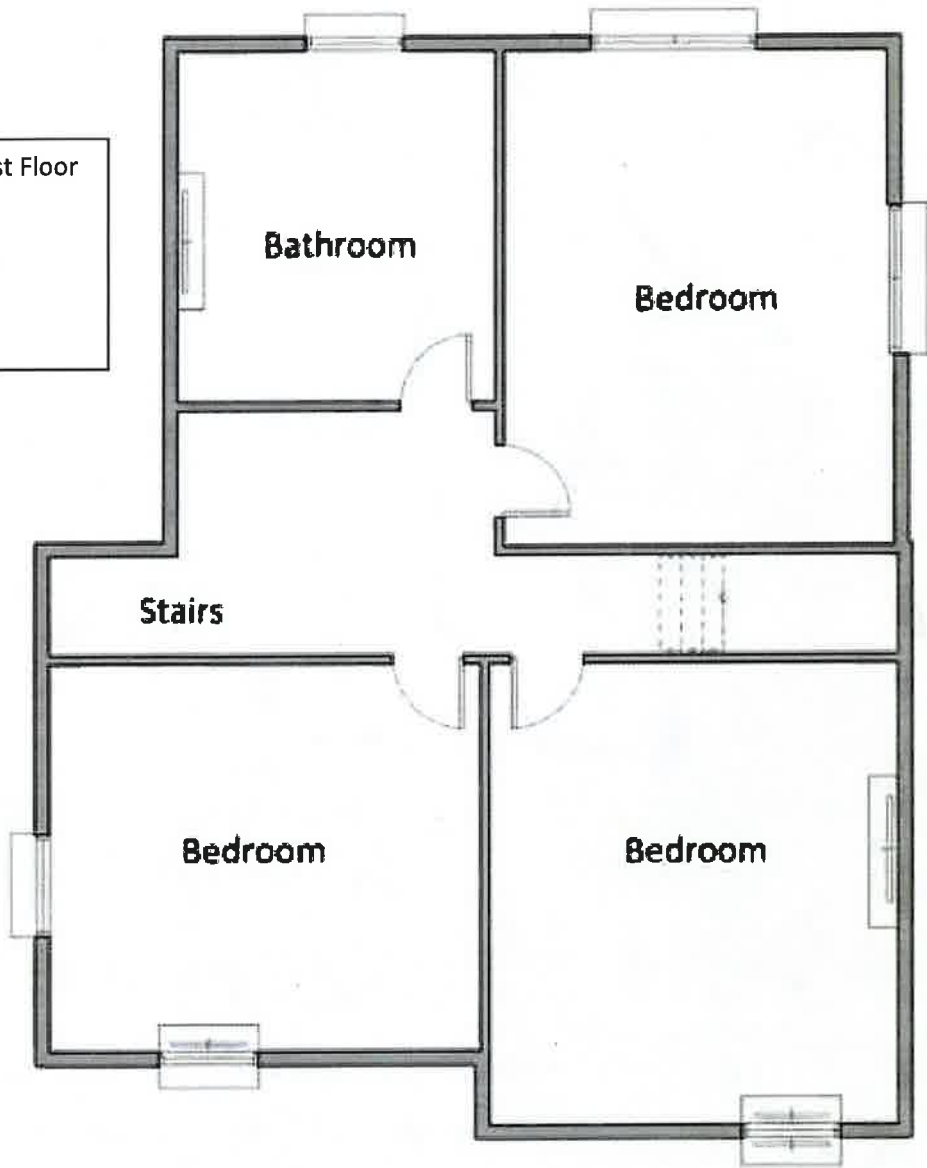


Proposed First Floor
Extension
5m (length) x
4m (width)

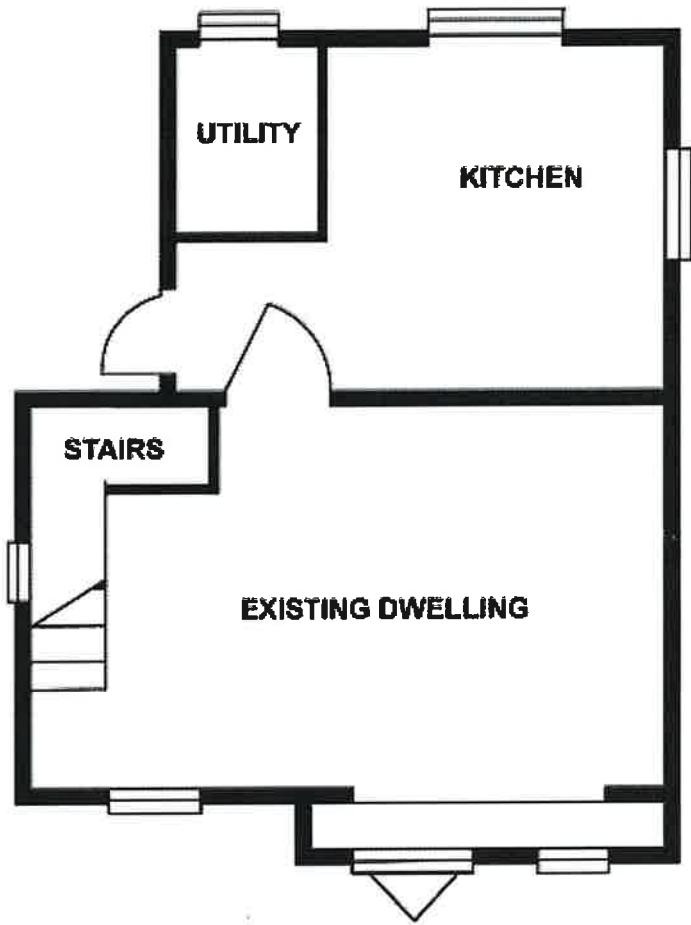


PLANNING SECTION
LEITRIM COUNTY COUNCIL

24 OCT 2025

REF P. ED-25-43

Proposed Ground
Floor Extension
5m (length) x
4m (width)



PLANNING SECTION
LEITRIM COUNTY COUNCIL
24 OCT 2025
REF P. ED-25-43